

SHADE  
ELEMENTS



# Horizon Monobloc Awning





Indoor-outdoor flow has become a necessity in contemporary design. The Horizon Monobloc Awning helps New Zealanders enjoy and enhance courtyards, sheltered retreats and outdoor rooms year-round.

The Horizon Monobloc is elegantly engineered using European technology and styling. Providing robust protection from harsh UV rays, it allows you to merge indoor living with the outdoors all-year round.

Made with quality aluminium and stainless steel, the Horizon Monobloc is easily operated manually or automated with the press of a button. When automated, a wind or motion sensor can be added to retract the awning during high winds. An aluminium hood can also be included for a streamlined protected finish. The Horizon Monobloc comes with a five-year warranty and has undergone rigorous testing to ensure it withstands extreme conditions. Through sophisticated design and technology, make the most of living, without the need to build or renovate.



**Create a versatile, beautiful outdoor space that connects seamlessly to your home and garden, while providing shelter from the elements.**



**Features**

**WIDTH X EXTENSION**

MIN – 1890 X 1500 mm

MAX – 13792 x 4000 mm

**FABRIC**

Docril - acrylic canvas

Serge Ferrari Soltis Lounge 96

**OPERATION**

Manual or Automated

**AUTOMATION OPTIONS**

Sun & Wind sensor

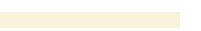
Motion sensor

**PROTECTION**

Hood (optional)

**HARDWARE COLOUR**

Warm White Pearl



Silver Pearl



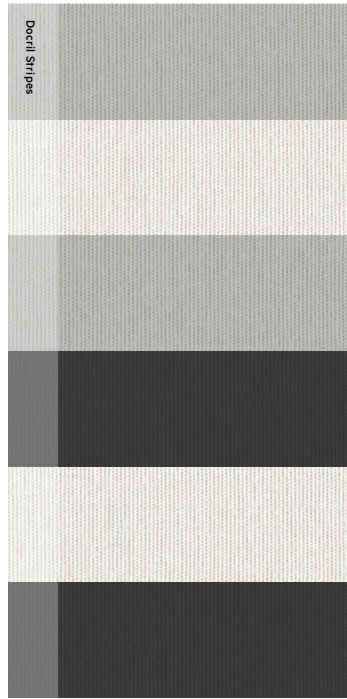
Matt Charcoal



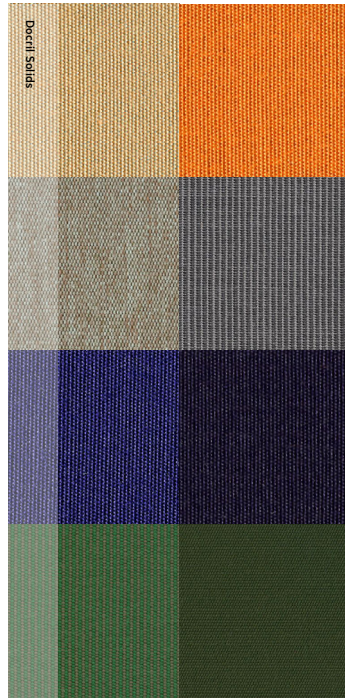


# Fabric

Colour - the key to creating the perfect environment for you. Our hardwearing fabric range has been carefully developed to make the very best outdoor living accents.



Docril acrylic aanvas is designed and manufactured in Spain and known for its superb quality and extensive colour palette.



Docril offers an impressive selection of vibrant colours to suit any décor and comes with a 10 year UV warranty.

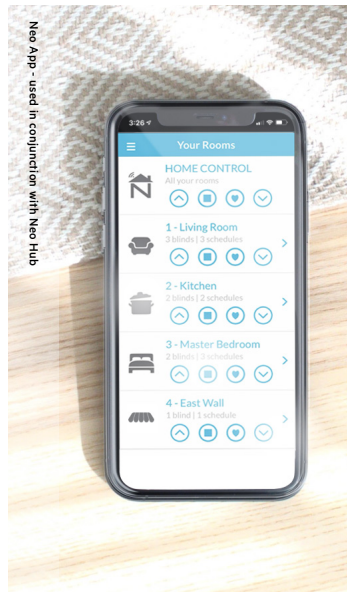


Soltis Lounge 96 is an optimised screen fabric that creates a comfortable ambience for outdoor living spaces. Designed and manufactured in France by Serge Ferrari, Soltis Lounge 96 is lightweight, durable and 100% recyclable.

# Automation

Awnings can be automated to respond to the touch of a button, allowing you to relax and enjoy the ease of remote operation.

Supplied By



NEW ZEALAND  
MADE