

SHADE ELEMENTS

Interiors

Follow this guide to measure your windows for our Venetian blinds

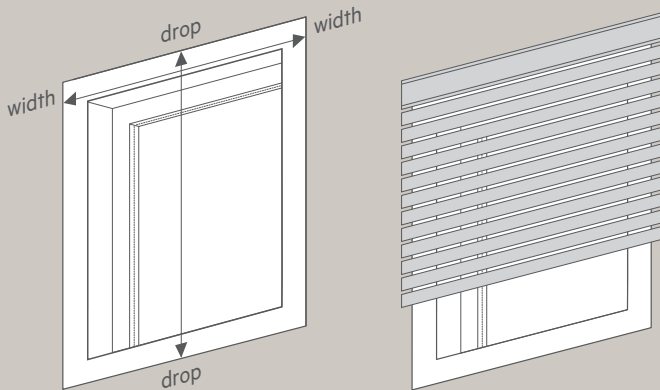
You will need

- A tape measure that reads in millimetres, long enough to reach across your entire window
- A way to record your measurements - pen & paper

Things to consider

- An inside fit requires a window recess deep enough and gaps around the blind for free movement. Fit your blind inside the window frame for a clean look.
- An outside fit is best for blocking light and insulation. Fit your blind to the outside of the window frame or to the wall just above the window frame for reduced light gaps.
- Inside and outside fitting blinds will have small gaps at the sides, top and bottom of the window.
- Make sure nothing is in the way of where the blind will hang so you can open and close them fully.

Outside Fit



Width

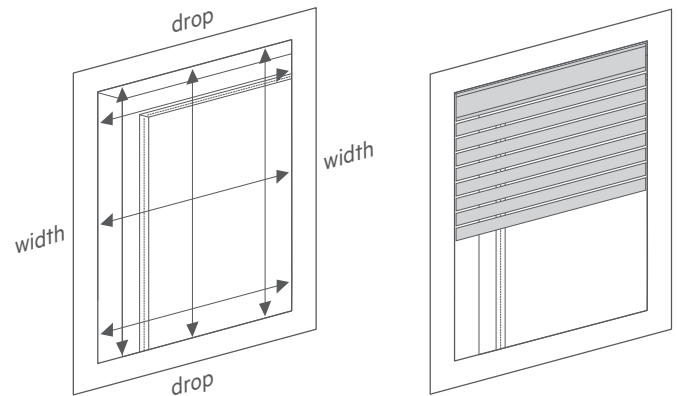
For venetians, fix onto the architrave or the reveal of the window frame, at the top of your window. Measure from the outer edge of the frame on one side to the outer edge on the other, and record this as your width.

Drop

Take your measurement vertically down middle of the window. Measure from the top of the outer edge of the window frame down to the sill, bottom of the window frame or lower if you wish and there is nothing obstructing the blind below. Record the measurement as your drop.

Tip: If fixing the blind above a window frame that is not flush with the wall, you may need to pack out the bracket enough to allow the blind to clear the window reveal when installed.

Inside Fit



Depth

This measurement is to ensure your blind will fit within the window recess. Measure inside the frame from the front to the first obstruction, eg. glass, latch, handle or mullion. Here's a guide of how much clearance is needed:

- Aluminium venetian - 40mm
- Wood or PVC venetian - 80mm (includes fascia)

Width

Take your measurement horizontally across the window at the top middle & bottom. Measure inside the frame, from frame to frame, not only the panes of glass. Record the smallest measurement as your width.

Drop

Take your measurement vertically down the left, middle & right of the window. Measure inside the frame, from frame to frame, not only the panes of glass. Record the smallest measurement as your drop.

Measuring for controls

Looking at your window, work out which side will be the most convenient to operate the blind from and how long you would like the cord length would be. If the window is high up, a longer cord will hang lower and be easier to reach, while for full length windows a shorter cord may be suitable and out of reach of children. Generally, the cord length is made at 75% of the drop of your blind.

Venetians blinds operate with either a cord to lower and raise and a wand to tilt the slats; or a series of cords to do both.

SHADE ELEMENTS

Interiors

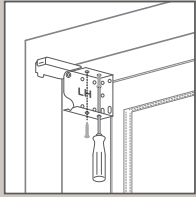
Follow this guide to install your 50mm & 60mm Venetian blinds

Getting started

Tools required;

- Pencil
- Tape measure
- Electric screwdriver
- #2 square drive

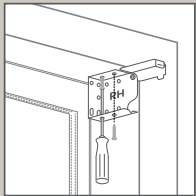
Inside Fit



Step 1

1 x LH bracket
2 x screws

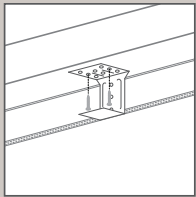
Fix the back of the left bracket 80mm from the front of the top left-hand corner of the window using the two screws provided.



Step 2

1 x RH bracket
2 x screws

Fix the right bracket inside the window frame in the top right-hand corner of the window in the same manner. Ensure that the back of the right bracket is in line with the back of the left bracket.

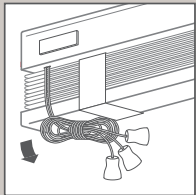


Step 3

Centre brackets (if supplied)
Screws (if supplied)

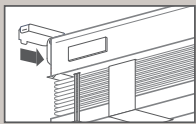
If the blind includes centre brackets space them evenly between the end brackets being careful to ensure that they do not line up with the strings in the top of the blind when installed.

Ensure that the backs of the centre brackets are in line with the back of the left and right brackets.



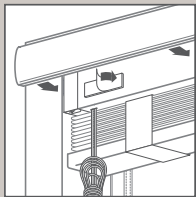
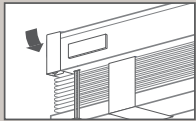
Step 4

Remove the control cord bundle from the top of the handrail, leaving the fabric ties that hold the blind together.



Step 5

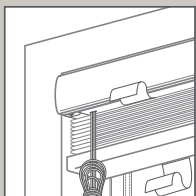
Open the end bracket latches and place the headrail into the brackets, keeping your control cords on the correct side. Close the latches firmly and ensure they 'click' closed.



Step 6

1 x pelmet
Velcro tabs

Peel the tape off the Velcro tabs attached to the headrail. Position the pelmet level with the top of the blind and attach by pressing firmly against the Velcro tabs.



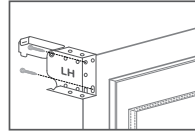
Step 7

While holding the blind in place, carefully untie the fabric straps.

Being careful not to damage the blind or cords when removing the packaging, unpack the blind and check all parts are included;

- Venetian blind
- 1 x pair of end brackets (plus centre brackets depending on blind width)
- 2 x screw per bracket
- 1 x pelmet with velcro tabs

Outside Fit

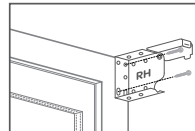


Step 1

1 x LH bracket
2 x screws

At the position originally measured from, fix the left bracket to the architrave or wall using two of the screws provided.

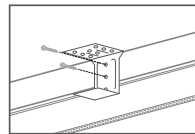
If positioning near the edge of the frame/architrave, pre-drill the holes to prevent splitting. If fixing to the wall you may need to pack out the brackets and use longer screws to allow the blind to clear the window reveal when opened.



Step 2

1 x RH bracket
2 x screws

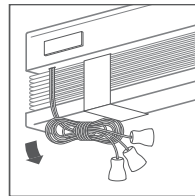
Repeat step 1 but on the right side using the RH bracket.



Step 3

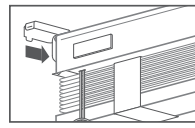
Centre brackets (if supplied)
Screws (if supplied)

If the blind includes centre brackets, space them evenly between the two end brackets being careful they do not line up with the strings in the top of the blind when installed.



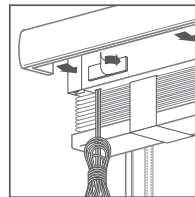
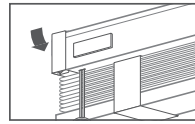
Step 4

Remove the control cord bundle from the top of the handrail, leaving the fabric ties that hold the blind together.



Step 5

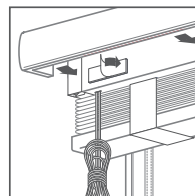
Open the end bracket latches and place the headrail into the brackets, keeping your control cords on the correct side. Close the latches firmly, ensuring they 'click' into place.



Step 6

1 x pelmet
Velcro

Peel the tape off the velcro tabs attached to the headrail. Position the pelmet level with the top of the blind and attach by pressing firmly against the velcro tabs.



Step 7

While holding the blind in place, carefully untie the fabric straps.