

**SHADE  
ELEMENTS**

# Integral Cassette





As innovators of outdoor-living solutions in New Zealand for many years, Shade Elements has become an industry leader of awnings, screens and retractable pergolas.

The classic design of the Integral Cassette awning works well across a range of architectural and design styles. The Integral Cassette is compact in size and renowned for its reliability, thanks to quality components that have long-served the European awning market.

Easy to install and operate, the awning can be retracted when not in use, ensuring the canvas and folding arms are completely concealed and not compromised by the elements. For effective sun protection, ease of use and style – the Integral Cassette is an excellent option for all environments.



We create versatile, beautiful outdoor spaces that connect seamlessly to homes and gardens, while providing shelter from the elements.



Features	WIDTH X EXTENSION	OPERATION	HARDWARE COLOUR
	MIN – 1815 X 1500 mm	Manual or Automated	Warm White Pearl
	MAX – 5000 x 3000 mm		
	FABRIC	AUTOMATION OPTIONS	
	Docril (acrylic canvas) – 80 colours	Sun & Wind sensor	
	Soltis Lounge 96 – 21 colours	Motion sensor	



# Fabric

Colour - the key to creating the perfect environment for you. Our hardwearing fabric range has been carefully developed to make the very best outdoor living accents.

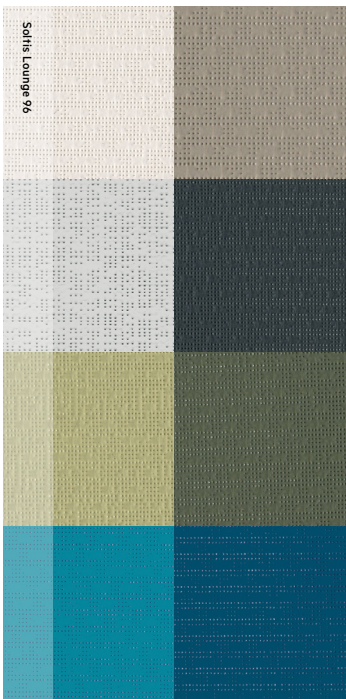
Visit [shadeelements.co.nz](https://shadeelements.co.nz) to see the full fabric collection.



Designed and manufactured in Spain and known for its superb quality with an extensive colour palette.



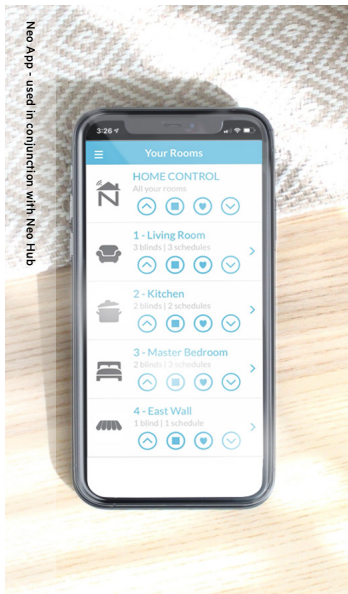
Docril offers an impressive selection of 80 vibrant colours to suit any décor and comes with a 10 year UV warranty.



Soltis Lounge 96 is an optimised screen fabric that creates a comfortable ambience for outdoor living spaces. Designed and manufactured in France by Serge Ferrari, Soltis Lounge 96 is lightweight, durable and 100% recyclable. Available in 21 colours.

# Automation

Awnings can be automated to respond to the touch of a button, allowing you to relax and enjoy the ease of remote operation.



Neo App - used in conjunction with Neo Hub



Navigator 5 Channel Remote



Navigator 8-16 Channel Remote



Motion Sensor



Sun & Wind Sensor

[SHADEELEMENTS.CO.NZ](https://shadeelements.co.nz)

