

SHADE  
ELEMENTS



# Vertigo Window Awning



As innovators of outdoor-living solutions in New Zealand for many years, Shade Elements has become an industry leader of awnings, screens and retractable pergolas.

The Vertigo Window Awning can significantly reduce cooling costs during summer and protect interior furnishings from the sun's harmful rays, while adding colour and style to your exterior.

Choose the material to suit your needs – Soltis Lounge 96 to provide visibility and diffused light; Docril canvas for privacy.



We create versatile, beautiful outdoor spaces that connect seamlessly to homes and gardens, while providing shelter from the elements.

Features	WIDTH X EXTENSION	OPERATION	HARDWARE COLOUR
	MIN – 500 X 750 mm	Manual or Automated	Warm White Pearl <div></div>
	MAX – 5850 × 1500 mm		Silver Pearl <div></div>
	FABRIC	AUTOMATION OPTIONS	
	Docril (acrylic canvas) – 80 colours	Sun & Wind sensor	
	Soltis Lounge 96 – 21 colours	Motion sensor	



# Fabric

Colour - the key to creating the perfect environment for you. Our hardwearing fabric range has been carefully developed to make the very best outdoor living accents.

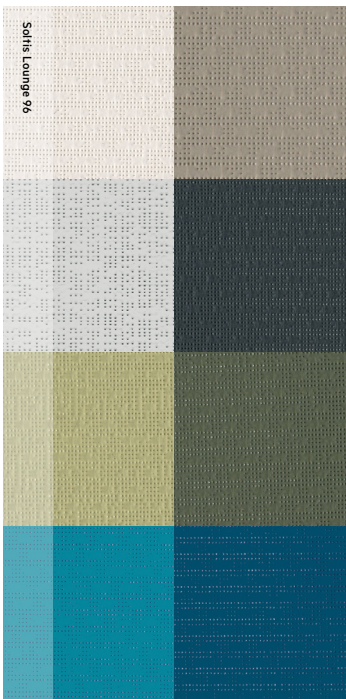
Visit [shadeelements.co.nz](https://shadeelements.co.nz) to see the full fabric collection.



Designed and manufactured in Spain and known for its superb quality with an extensive colour palette.



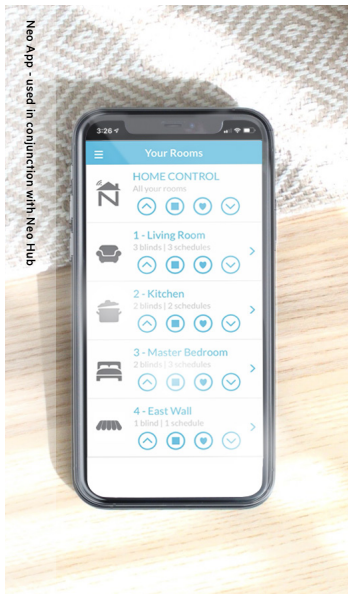
Docril offers an impressive selection of 80 vibrant colours to suit any décor and comes with a 10 year UV warranty.



Soltis Lounge 96 is an optimised screen fabric that creates a comfortable ambience for outdoor living spaces. Designed and manufactured in France by Serge Ferrari, Soltis Lounge 96 is lightweight, durable and 100% recyclable. Available in 21 colours.

# Automation

Awnings can be automated to respond to the touch of a button, allowing you to relax and enjoy the ease of remote operation.



[SHADEELEMENTS.CO.NZ](https://shadeelements.co.nz)

